

The cover features a series of concentric blue ovals at the top, with the name 'Roberto Beccaceci' in a bold, black, serif font. A series of parallel diagonal lines crosses the entire page from the bottom left to the top right. In the center, the title 'ENIGMA VARIATIONS' is written in a large, bold, black, serif font, with 'per piccola orchestra' in a smaller, bold, black, serif font below it. At the bottom, the text 'Trombone tenore in Sib' is written in a black, italicized, serif font.

**Roberto Beccaceci**

**ENIGMA VARIATIONS**  
**per piccola orchestra**

versione delle

*VARIAZIONI SOPRA UN "FRAMMENTO" DI LEONARDO*

per complesso da camera

*Trombone tenore in Sib*

## ABBREVIAZIONI E SEGNI CONVENZIONALI

### 1. Fiati:

**flttz.** *flutterzunge.*








### 2. Percussioni / Arpa:

<b>l.v.</b>	lasciar vibrare,	<b>,</b>	suono smorzato;
<b>M</b>	motore acceso;	<b>M</b>	motore spento.

### 3. Archi:

<b>arco</b>	con l'arco,	<b>legno</b>	col legno,	<b>punta</b>	alla punta;
<b>N</b>	posizione normale;				
<b>&gt;&gt;pont.</b>	verso il ponticello,	<b>pont.</b>	sul ponticello;		
<b>&gt;&gt;tast.</b>	verso la tastiera,	<b>tast.</b>	sulla tastiera;		
<b>♯</b>	pizzicato "strappato" (Bartók).				

### 4. Indicazioni comuni:

<b>ord.</b>	ordinario (esecuzione normale);		
<b>s.att.</b>	senza far sentire l'attacco;		
<b>Sord.</b>	con sordina,	<b>S. Sord.</b>	senza sordina;
<b>SV</b>	senza vibrare,	<b>VL</b>	vibrato lento,
<b>V</b>	vibrato normale,	<b>VR</b>	vibrato rapido;
<b>SV</b> 	<b>VL</b>	passaggio graduale dal <i>non vibrato</i> al <i>vibrato lento</i> ;	
		passaggio graduale da un tipo di <i>vibrato</i> ad un altro;	
	accentato (come un tempo forte);		
	disaccentato (come un tempo debole);		
i segni:    indicano un comune livello dinamico di tutte le parti prive di indicazione propria;			
<b>,</b>	respiro normale,	<b>;</b>	respiro lungo.

## AVVERTENZA

I segni di alterazione hanno valore - esclusivamente - nell'ambito della misura e del singolo pentagramma cui si riferiscono.

*Durata: 11' : 30'' – 12'*

**Trombone tenore**  
*in Si $\flat$*

**ENIGMA VARIATIONS**  
per piccola orchestra

versione delle *VARIAZIONI SOPRA UN "FRAMMENTO" DI LEONARDO*, per complesso da camera

R. Beccaceci  
(2002 - '03)

**- Introduzione**

**Andante con moto**

$\text{♩} = 72 \text{ ca.}$

*rit. molto grad.*

31 4

Musical notation for the introduction, measures 31 and 4. The notation is in bass clef. Measure 31 is in 6/8 time and contains a whole note. Measure 4 is in 3/4 time and contains a whole note. The measures are separated by a double bar line.

**- Tema**

*"Frammento"* di Leonardo da Vinci

----- *al* **Tranquillamente e senza rigore; come un recitativo**

$\text{♩} = 92 - \text{♩} = 46 \text{ ca.}$

36

Musical notation for the theme, measures 36 to 42. The notation is in bass clef. Measure 36 is in 3/4 time and contains a whole note. Measure 37 is in 7/8 time and contains a whole note. Measure 38 is in 3/4 time and contains a whole note. Measure 39 is in 3/8 time and contains a whole note. Measure 40 is in 3/8 time and contains a whole note. Measure 41 is in 3/8 time and contains a whole note. Measure 42 is in 3/8 time and contains a whole note. The measures are separated by double bar lines.

43

Musical notation for the theme, measures 43 to 48. The notation is in bass clef. Measure 43 is in 5/8 time and contains a whole note. Measure 44 is in 4/4 time and contains a whole note. Measure 45 is in 5/8 time and contains a whole note. Measure 46 is in 5/8 time and contains a whole note. Measure 47 is in 3/4 time and contains a whole note. Measure 48 is in 3/4 time and contains a whole note. The measures are separated by double bar lines.

49

*rit. molto* ----

Musical notation for the theme, measures 49 to 54. The notation is in bass clef. Measure 49 is in 3/4 time and contains a whole note. Measure 50 is in 2/4 time and contains a whole note. Measure 51 is in 7/8 time and contains a whole note. Measure 52 is in 3/4 time and contains a whole note. Measure 53 is in 6/8 time and contains a whole note. Measure 54 is in 6/8 time and contains a whole note. The measures are separated by double bar lines.

### ***- I variazione***

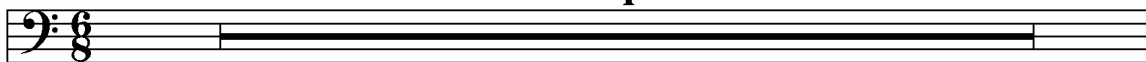
## Un poco animato, ma senza precipitare

♩. = 36 ca.

54-57

**Sord. muta**

4



58


$$p \leq mp \leq p$$
 $\geq ppp$

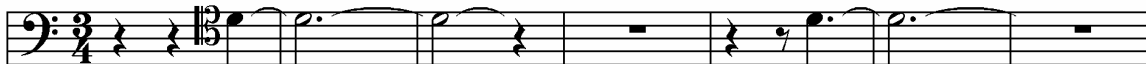
## - II variazione

**Molto moderato, ma senza cedere**

♩ = 44 ca.

62

Sord. wà-wà SV sempre



*ppp* eseguire le fluttuazioni dinamiche variando l'apertura della sordina

69



76



*poco rit.*

2

2

*ppp*

# *- III variazione*

**Tumultuoso; con impeto**

♩ = 116 ca.

*acc. lievemente* -----

84

S. Sord.

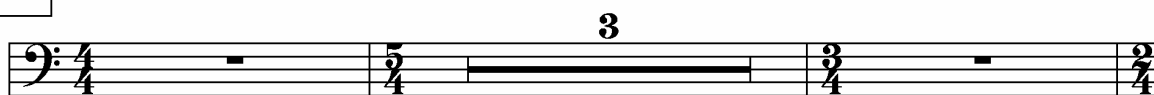
7 2 flttz.

*sfz* *f* *fff*

**- IV variazione****Largo estatico; visionario**

♩ = 22 ca.

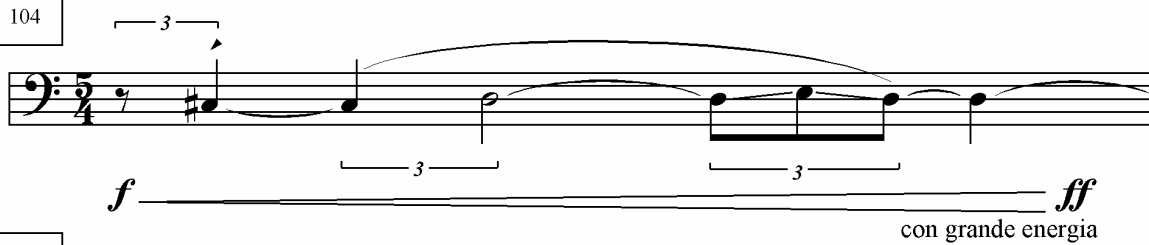
97



102



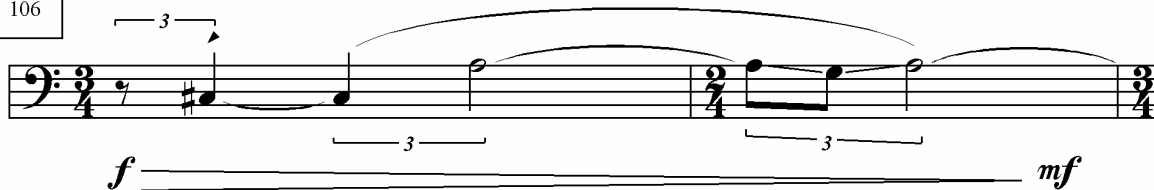
104



105



106



108



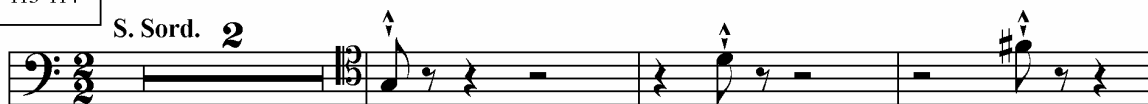
## - *V* variazione

**Agitatissimo; convulso**

$\text{♩} = 69 \text{ ca.}$

113-114

S. Sord. **2**



*sffz* sempre molto secco; quasi "slap tongue"

118

*rit. lievemente* . . . .





**- VI variazione****Adagietto scorrevole**

♩ = 36 ca.

137

Sord. muta

*ppp*

s.att. sempre

140

*f*

143

*ppp*

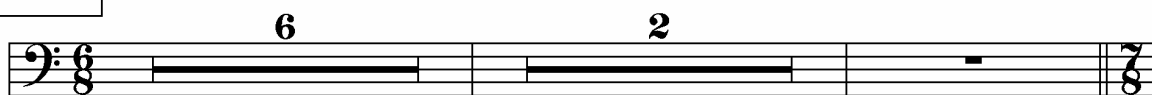
## - VII variazione

Lievemente mosso

♩. = 44 ca.

147-152

*rit. molto grad.*-----



attacca subito

## - Finale

----- ***al*** Moderato ma ansioso; a poco a poco rasserenando

♩ = 80 ca.

156-162 Sord. metallica

*mp* *liev.*

166-171

*mp* *liev.*

## - Coda

Lo stesso tempo; tranquillamente

172-178

*muovendo con estrema gradualità* -----

179-185

--- ***all'*** Andante con moto (come all'inizio)

186-188

*rit. molto*